

---

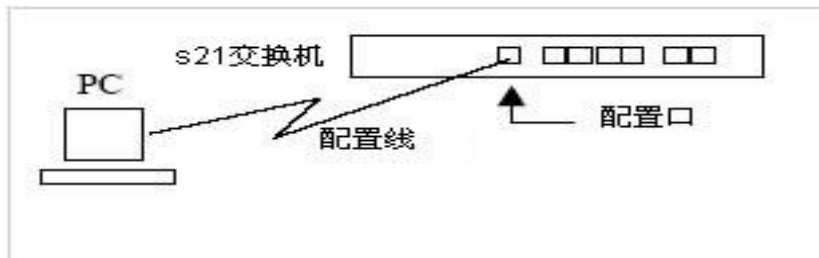


RGOS  
21 20 3550 3750 3760 5750 10.X  
21

# 10.X


**FLASH**                      **config.text**

A      pc



B      pc

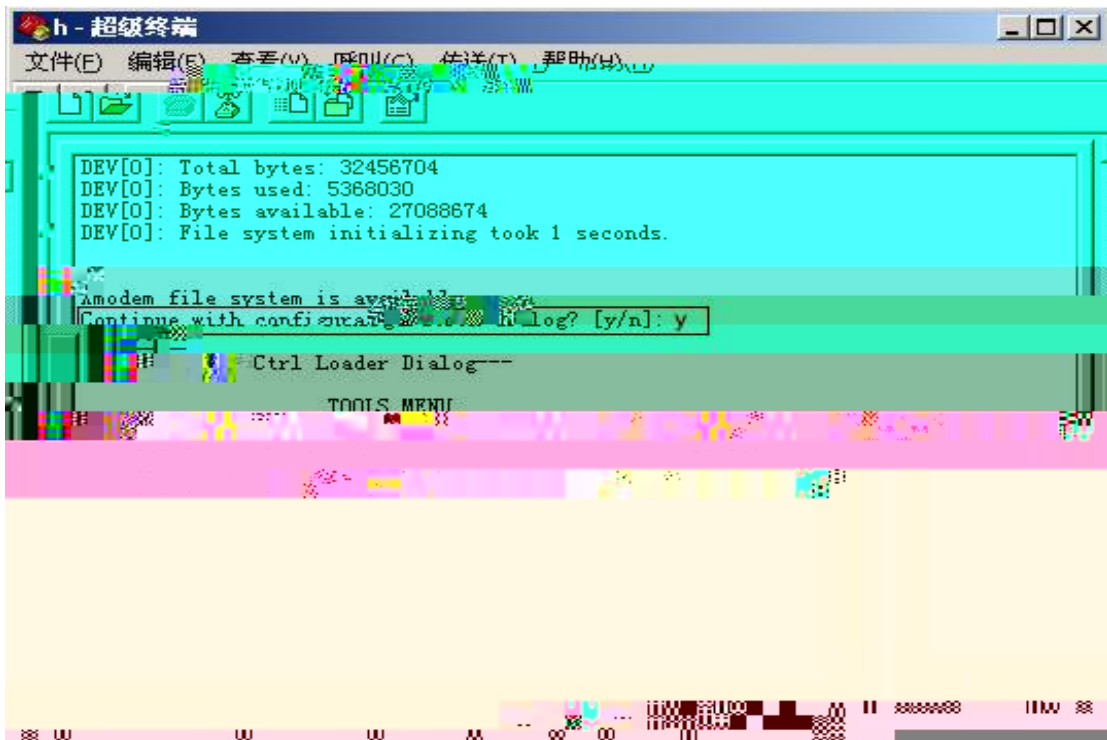
57600



3 " " " ESC" ctrl

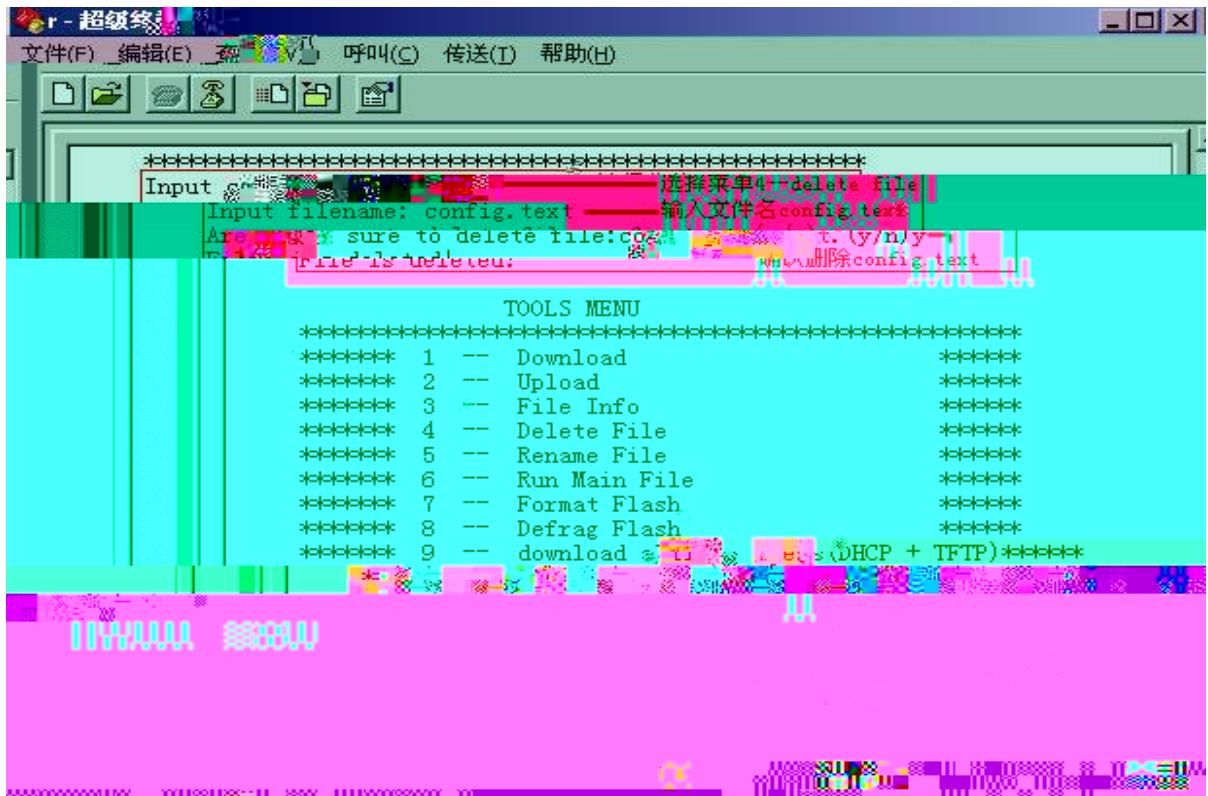
config.text

Continue with configuration dialog?[y/n] y



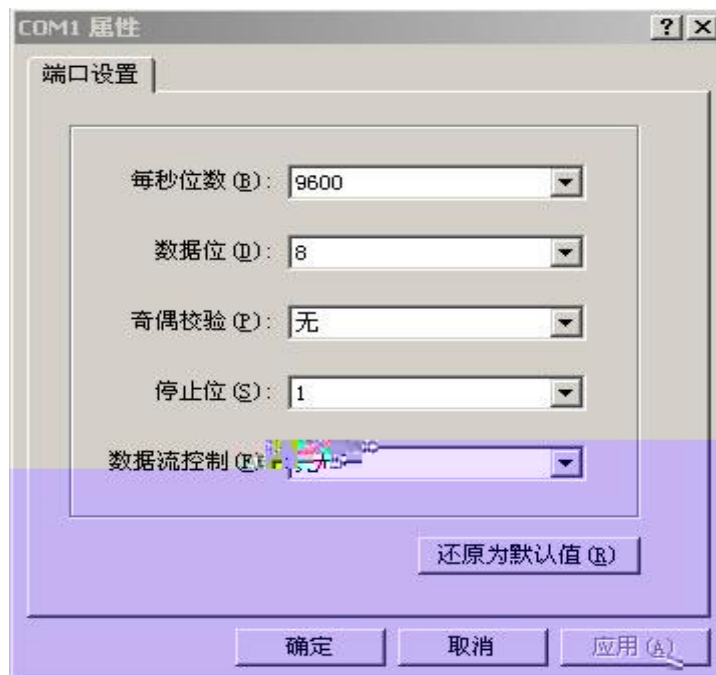
4—delete file ;

input filename:config.text ; y 6



D. 6—Run Main File

E. 9600 console



F.

**start: Enable sec level 15 0 start**

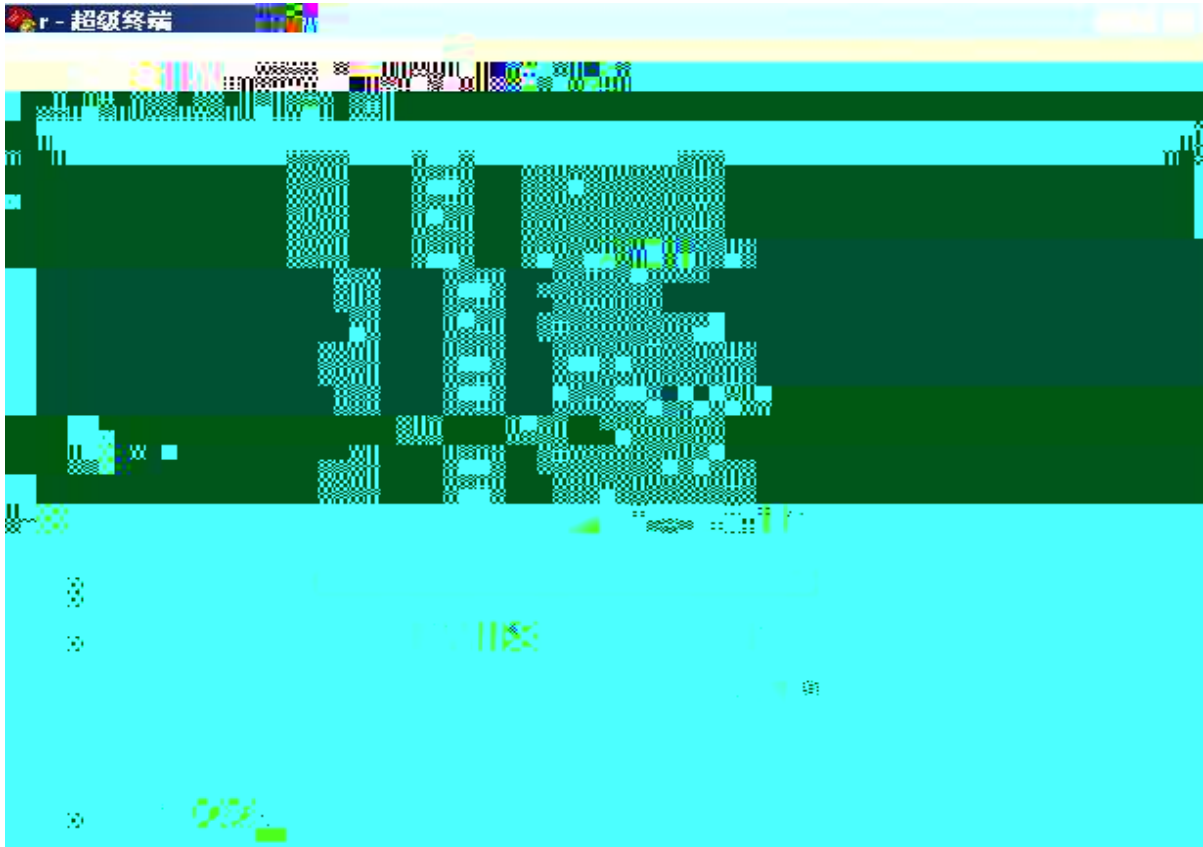


649	live	cli11.htm
649	live	cli12.htm
649	live	cli13.htm
649	live	cli14.htm
649	live	cli15.htm
1147	live	index.htm
2251	live	vms15.htm
1285062	live	webclt.jar
314192	live	image.jar
2274	dead	accessproxy.dat
2274	dead	accessproxy.dat
133	dead	config.text
48	dead	vlan.dat
4	dead	priority.dat
2274	dead	accessproxy.dat
2274	dead	accessproxy.dat
2274	dead	accessproxy.dat
2274	dead	accessproxy.dat
<b>250</b>	<b>live</b>	<b>config.text</b>
48	live	vlan.dat
4	live	priority.dat
2274	live	accessproxy.dat

72 files, 5344732 bytes, 27088430 free bytes.



config.text



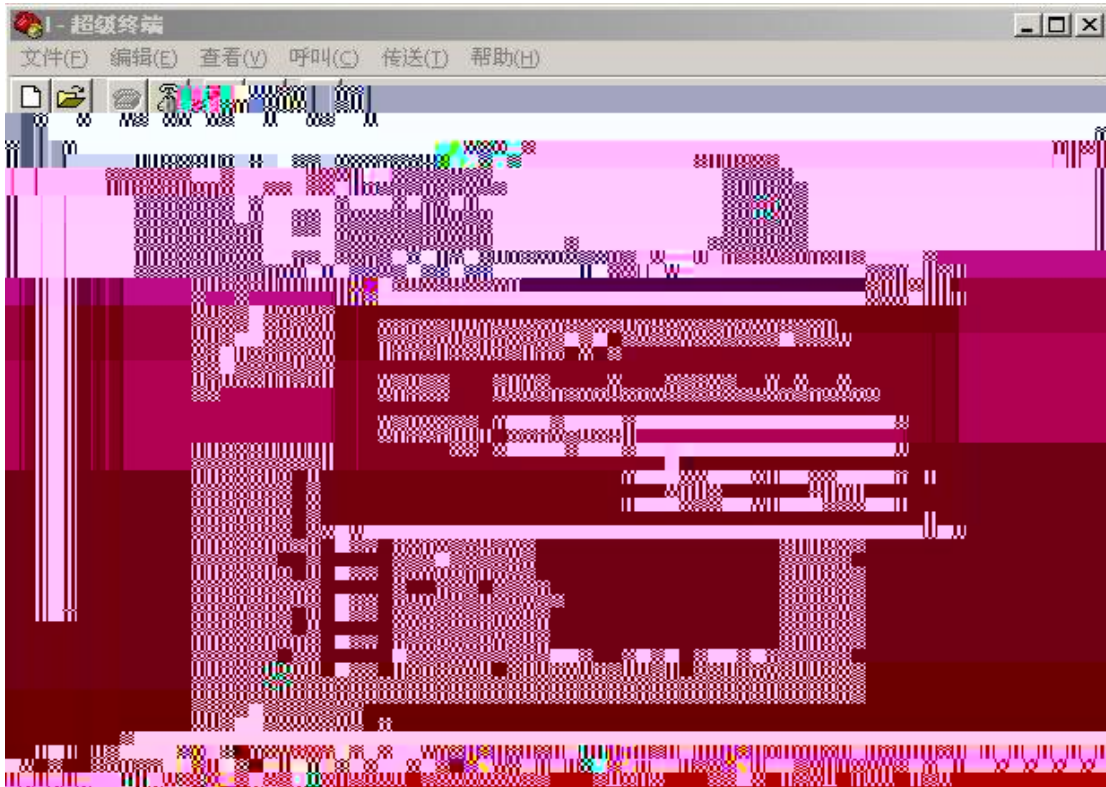
CTRL

CTRL

CTRL

pc

config.text



### 1k Xmodem

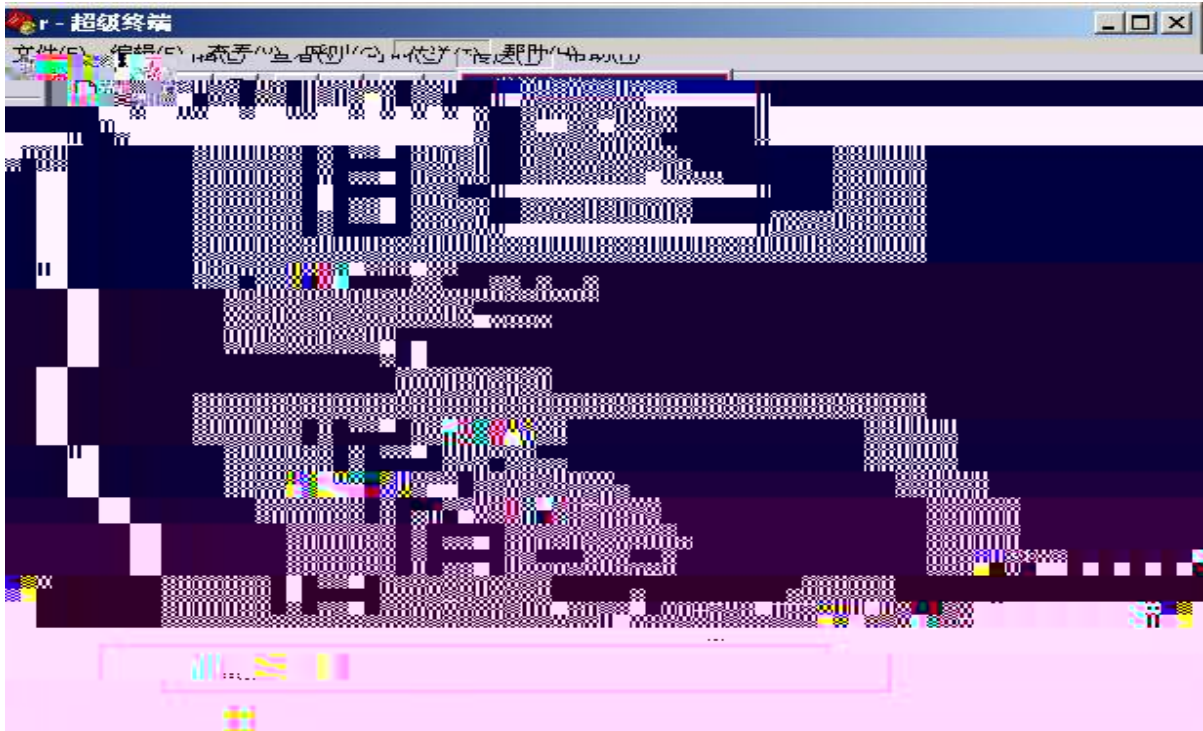


---

```
!  
version 1.0  
!  
hostname s21  
vlan 1  
!  
enable secret level 1 5 $2>H.Y*T3;C,tZ[V4<D+S(\WQ=G1X)sv  
enable secret level 15 5 $2tj9=G13/7R:>H.41u_;C,tQ8U0<D+S  
!  
interface vlan 1  
  no shutdown  
  ip address 192.168.26.49 255.255.255.0  
!  
end
```

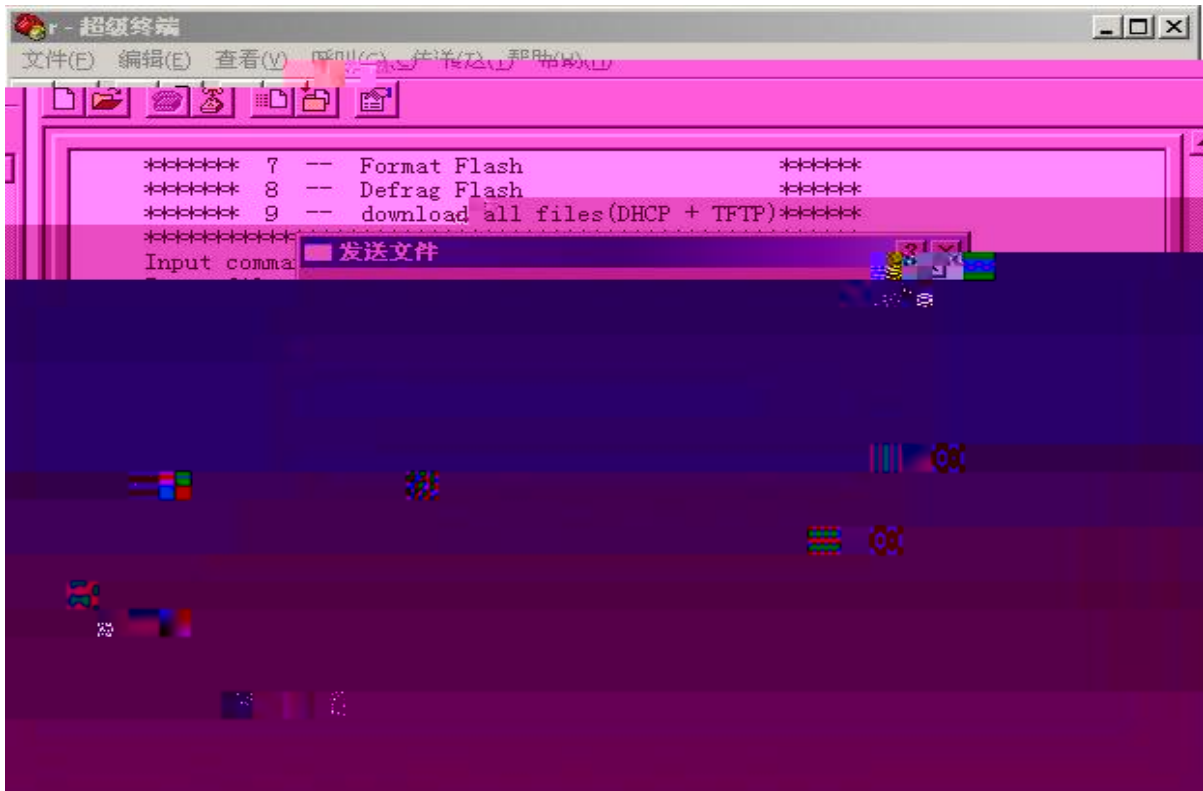
```
!  
version 1.0  
!  
hostname s21  
vlan 1  
  
!  
interface vlan 1  
  no shutdown  
  ip address 192.168.26.49 255.255.255.0  
!  
End
```

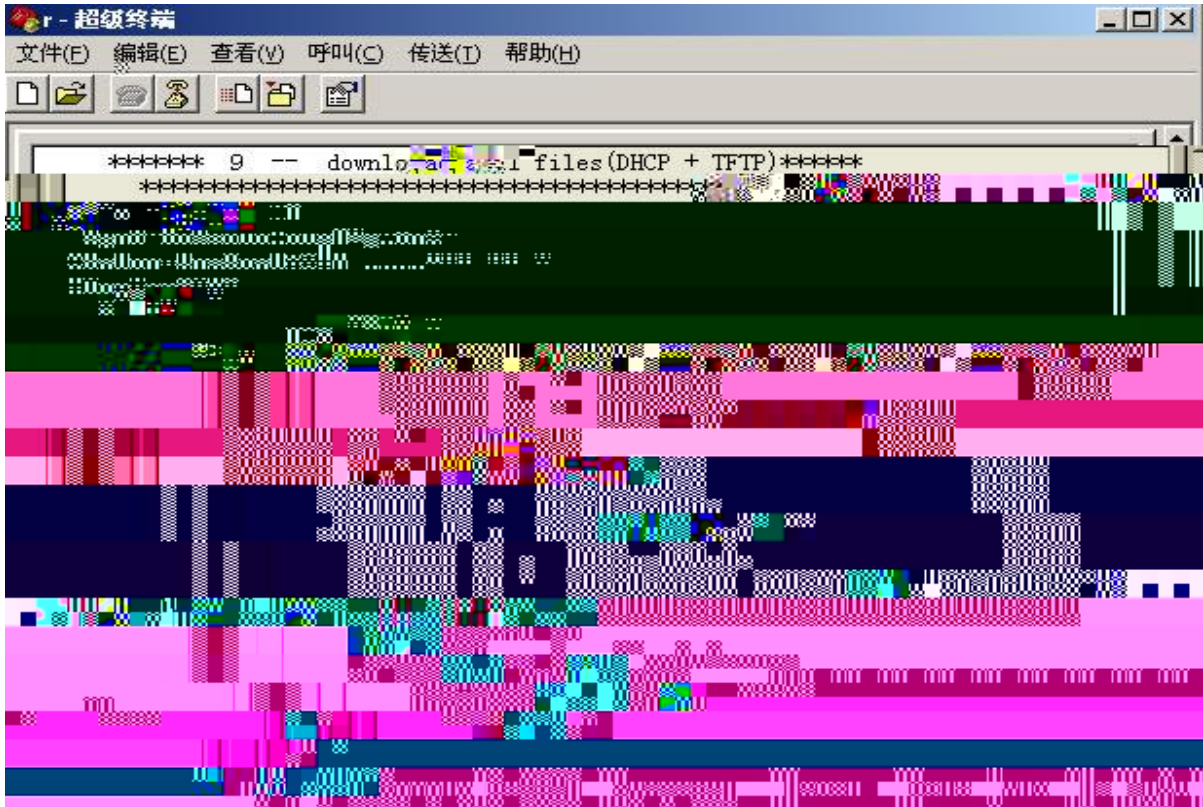
```
      config.text  
flash  
  
input command 1,  
input filename:config.text  
—
```



config.text,

config.text

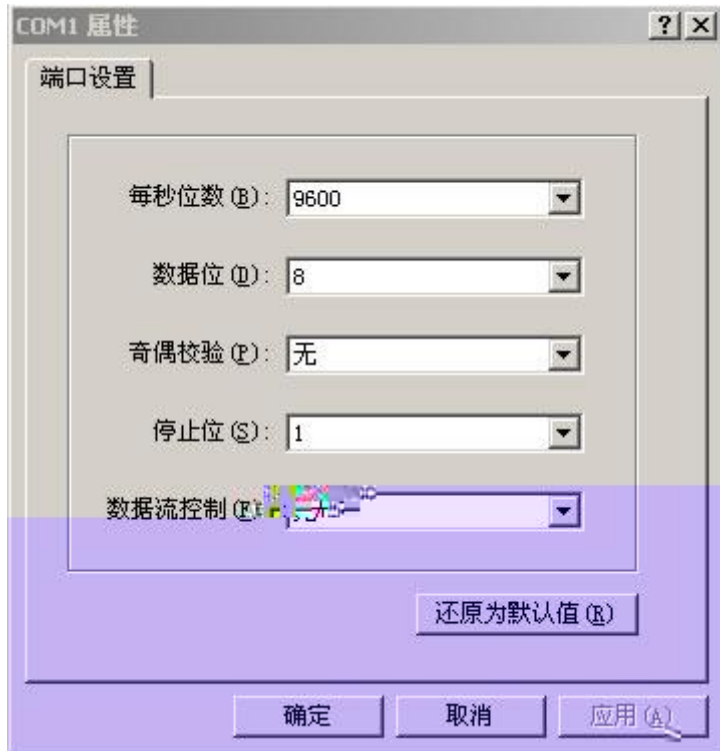




6,



9600



```
star  
s21>enable  
s21#config t
```

---